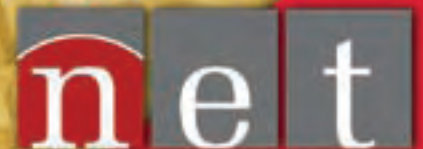


PARTNERS

INSIDE

- 2** Message from the Foundation Director
- 3** Short Takes
- 4** Nebraska Women's Volleyball
- 5** Murder House
Veterans' Day Programs
- 6** On the Dial: NET Radio
- 8** Foundation News
- 9** Donors' Corner
NET Card Partners
- 10** Out & About
Upcoming Events
- 12** New PBS Kids Programs

Inspire Nebraska



Television • Radio
Learning Services • Technology Services

Nebraska's  PBS &  npr stations



October 2007 PARTNERS

The mission of NET is to enrich lives and engage minds, connecting communities and celebrating Nebraska with services that educate, entertain and enlighten.

NET FOUNDATION FOR TELEVISION AND NET FOUNDATION FOR RADIO BOARD OF DIRECTORS

CO-PRESIDENT: Kenneth L. Cheloha, Lincoln

CO-PRESIDENT: Aileen D. Gruendel, Ph.D. Grand Island

CO-VICE PRESIDENT: Brian Young, Omaha

CO-VICE PRESIDENT: Bradley J. Krivohlavek, D.D.S., P.C., Norfolk

SECRETARY/TREASURER: Rod Bates, Lincoln

ASST. TREASURER: Randal Hansen, Lincoln

ASST. SECRETARY: Jeff Beckman, Lincoln Michael Winkle, Lincoln

BOARD MEMBERS: Beverly A. Atkins, Dix Margaret Berry, Lincoln Ardyce Bohlke, Hastings Rick Bourque, Ogallala Dr. Ruth Brown, Johnson Lake Sandra C. Douglas, Omaha Dr. Maurine Eckloff, Kearney

BOARD MEMBERS: Nancy Forney, Scottsbluff

Charles Fort, Kearney Sandy Friedman, Omaha Kyle Hanson, Kearney Kim Hilliard, Kearney Margaret Hornady-David, Grand Island

Bell Island, Gering Dr. Kay Lynn Kalkowski, Lincoln

Roger Larson, Lincoln Roger Massey, Lincoln

James Mastera, Lincoln Frank Matthews, Elkhorn

John McPhail, Columbus Don Pederson, Lincoln

Pam Price, Grand Island Marilyn Rahmig, Scottsbluff

J. Robert Sandberg, Lincoln Margaret Sibbitt, Hyannis

Sam Sidner, Lincoln Susan Stibal, Lincoln

Rita Stinner, Scottsbluff Glenn Van Velson, North Platte

Arnold Weitz, Omaha

NEBRASKA EDUCATIONAL TELECOMMUNICATIONS COMMISSION

CHAIR: Mary Harbaugh, Grand Island

VICE CHAIR: Stan Carpenter, Lincoln

EXECUTIVE COMMITTEE MEMBER: Dara Troutman, Lincoln

SECRETARY/TREASURER: Rod Bates, Lincoln

ASST. SECRETARY/TREASURER: Randal Hansen, Lincoln

COMMISSIONERS:

Dr. Kenneth Bird, Omaha

Dr. Doug Christensen, Lincoln

Dr. Phillip Dudley, Jr., Hastings

Mandy Johnson, Omaha

Dennis Miller, Jr., Lewellen

Robert Moline, Lincoln

J. Richard Shoemaker, Cambridge

Clay Smith, Lincoln

TRUSTEES COUNCIL

Robert M. Allen, Hastings Richard W. Bailey, Lincoln James R. Beatty, Omaha Ann K. Beckenhauer-Wimmer, West Point Keith L. Blackledge, North Platte Jon & Ardyce Bohlke, Hastings Sharon Brodkey, Omaha Jack D. Campbell, Lincoln Dr. Michael Cartwright, Chadron Donald & Judy Dworak, Columbus James Faimon, Lincoln James V. Griesen, Lincoln Dr. William T. Griffin, Lincoln Doris Harrington, Chadron Philip J. Heckman, Lincoln

Dr. Donald W. Helmuth, Raymond Alan Hersch, Lincoln Michael S. Kneale, Grand Island Robert Krohn, Omaha Kathleen Lohr, Columbus Richard Meyer, Scottsbluff Phyllis Narveson, Lincoln Robert L. Nefsky, Lincoln Ken Obermiller, Grand Island Ann Pickel, Omaha Jacquelyn H. Rosenlof, Kearney Lynne K. Rustad, Lincoln DiAnna Schimek, Lincoln Herb Schimek, Lincoln George W. Wimmer, West Point Elaine Wolf, Albion

CONTACTS

NET Foundation for Television NET Foundation for Radio 1800 N. 33rd Street Lincoln, NE 68503

Web Address: netNebraska.org

For Information call: 800.634.6788 402.472.6788

For Programming Information call: 402.472.3611, ext. 217

Message from the Foundation Director

On behalf of the NET staff and all Nebraskans statewide who enjoy NET's services, I want to thank you for your generous support this year. Your contributions were vitally important and greatly appreciated, enabling us to produce outstanding television and radio programs like Most Honorable Son, Crane Song, Friday Live and Nebraska News, plus coverage of Nebraska Women's Volleyball and dozens of other sports events.

Your gifts also allowed us to purchase the programs you enjoy from PBS - like American Experience, NOVA, Antiques Roadshow and Masterpiece Theatre.

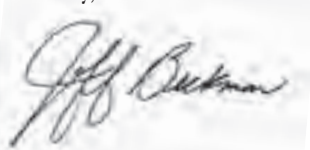
You can take pride in knowing that your member donations are directly invested into programming on NET Television and NET Radio. The state and federal support we receive is primarily invested into the infrastructure of NET - towers, transmitters, engineering and equipment. Private funds from you, on the other hand, support programming, allowing music, history, science, entertainment and sports to come alive on our radio and television airwaves.

We expect to meet your viewing and listening needs and interests again in 2008, and we are confident that private support to NET will continue growing. We encourage you to consider making a generous gift to NET in 2008.

NET exists to meet the broadcast interests and needs of all Nebraskans. Our job is to create and air inspiring programs that educate, entertain and enlighten everyone from Scottsbluff to Blair, from Valentine to Hebron and from South Sioux City to McCook.

Thank you again for your support in 2007 and your continued support in 2008. Please call me directly at 402.472.9333, ext. 380, or email jbeckman@netNebraska.org with questions or concerns.

Sincerely,



Jeff Beckman Executive Director NET Foundation for Television and NET Foundation for Radio

In the News

One of our goals at NET is to connect with you - so we try to get out and about to various events across the state.

In August I had the pleasure of throwing the first pitch for the Omaha Royals as they took on the Tucson Sidewinders at Rosenblatt Stadium. I threw a bullet [that's a fastball in baseball lingo] and the Royals signed me on the spot.

Okay, so I'm bending the truth a bit. In fact, I took the less risky approach, seeing as the eyes of 7,500 fans were on me, and tossed a fat pitch! But, it felt good to have my 15 minutes of fame - and the NET staff members and I were thrilled to meet and greet the hundreds of fans who stopped by our table. Hope to see you out and about sometime soon.



NET is a proud member of Community Services Fund.



Short Takes

NEBRASKA VETERANS HONOR ROLL

The Greatest Sacrifice

NET Television is committed to telling the stories of our brave men and women in uniform, with programs like *On the Frontline*, *Canteen Spirit* and *Most Honorable Son*. We highlight these stories of courage, honor and generosity so that future generations will understand and appreciate the sacrifices made by so many.

Tune in on Sunday, November 11 at noon and 6 p.m. CT on NET1 for another NET Television original program, the *Nebraska Veterans Honor Roll*, which will proudly honor the dedication and courage of Americans who have served or are currently serving in the military. The *Honor Roll* will also be listed on the Web site netNebraska.org/veterans.

Thank you for helping us honor those who have made the greatest sacrifice.

Talking about Water

We drink it, cook with it, bathe in it and even occasionally take a dip in it. But few of us give much thought to water. In June NET Television broadcast the original high-definition documentary *The Price of Water*, which explored where our water comes from, who uses it and what Nebraskans are doing to sustain it for the future.

Now NET, in partnership with the Groundwater Foundation, has produced an accompanying outreach kit – 500 copies of which will be distributed to public libraries, extension and agriculture partners, health experts, science educators and community leaders to educate Nebraskans further on these critical water issues.

The resource kit will include the one-hour documentary *The Price of Water*; a printed educational guidebook; a PowerPoint presentation; interview segments with water experts and other educational resources.

The resource kits will be available in public libraries for checkout in October. For more information, visit netNebraska.org/priceofwater.

Be More...Aware!

Next time you're driving around Omaha, look up. You just may catch one of NET Television's new billboards. We're pleased to showcase our educational and entertaining programs – like our smart kids shows, intriguing Nebraska stories and, of course, spectacular sports!



Nebraska's Dream

NET Television spotlights the history of the Nebraska Women's Volleyball program.

Fans cheered until they were hoarse and the applause thundered to the rafters of the Qwest Center as the Nebraska women slammed their final kills against Stanford to win the 2006 NCAA Division I Women's Volleyball Championship last December. A record crowd of more than 17,000 leapt to their feet, swarming the court as the Husker women threw themselves into an embrace of victory.

It's the stuff every young athlete's dreams are made of, and it became reality on December 16, 2006. But it wasn't always a fairy-tale success. Tune in to NET Television this December for the special one-hour, high-definition documentary *Dream Like a Champion*, featuring an exclusive look at the making of a national championship team and the history behind the nation's premier women's volleyball program. The NET Sports-produced documentary chronicles Nebraska Volleyball's run for the National Championship title, from the devastating loss in San Antonio to the thrilling win at the 2006 NCAA Final Four in Omaha.

Humble beginnings

University of Nebraska women's athletics dates back to the 1890s, when student Louise Pound excelled in tennis, golf and cycling. But it was nearly a century before women's athletics was taken seriously on a competitive level. Responding to the concerns of the faculty, who considered women's athletics inappropriate, the University Board of Regents abolished intercollegiate sports for women at one point. It was only the landmark passage of the Title IX Educational Amendment in 1972 that forced gender equity in Nebraska and in schools across the nation.



"Initially, there wasn't an embracing of women's athletics," says former Head Volleyball Coach Terry Pettit. "It's like any civil rights movement almost. It's tolerated, and you have to educate the public as to what it means."

Pettit acknowledges that it was Nebraska's ambition and vision that propelled support for women's athletics. "We jumped in with both feet," he says. "While other schools hesitated, Nebraska decided, 'Well, if we're going to do this, let's do it well.'"

During Pettit's 23 years as coach, his teams achieved 694 victories, won a National Championship in 1995 and made six Final Four appearances — in short, volleyball became to Husker women's athletics what football is to the Nebraska men's program. Pettit retired in 2000, handing the reins over to John Cook, who, though facing the daunting task of filling Pettit's shoes, has since put his own fingerprints on Nebraska Volleyball.

Behind the scenes

In addition to blending fascinating stories of Nebraska Volleyball's early years with the inspirational 2005-2006 National Championship season, *Dream Like a Champion* also takes viewers behind the scenes to the 2006 Husker Asia trip. Segments also include commentary from current and past players and national rivals, as well as an insider's look at the Nebraska Coliseum, which Pettit views as a critical component of the Husker's success.

"It's an intimate facility, a collegiate facility," he explains. "Fans are only 10 or 15 feet from the playing court, so they can tell whether or not there's enthusiasm, whether or not the athletes are communicating. That's what they really come to see. It certainly helps that Nebraska wins, but you can't have a great enterprise, whether it be a business or an athletic team, unless you have an identity."

NET cameras were also along to witness the dramatic loss in San Antonio, when the number

Team

two-ranked Washington Huskies overpowered the Huskers, denying them a National Championship. The documentary captures how the women rebounded from the loss, forging team unity and lasting friendships during a trip to China and persevering through the extreme pressure and roller coaster ride of the following season.

“It was just such a long journey for our team. Starting in China, we went through some rough times,” said player Jordan Larson after the National Championship. “I knew we would pull it together in the end.”

Join NET Television in December for *Dream Like a Champion*, an inspiring look at Nebraska’s own Dream Team.

Grab the Best Seat in the House

Check local listings or netNebraska.org for details.

Nebraska Women’s Volleyball Live
7 p.m. CT on NET1 and NET-HD

Wednesday, October 31
Missouri vs. NU

Saturday, November 3
NU at Kansas State

Wednesday, November 7
Colorado vs. NU

Nebraska State Volleyball Championships Live
Saturday, November 10

9:30 a.m. – 2 p.m.
and 5-9:30 p.m. CT on NET1
and NET-HD and webcast on
netNebraska.org

Nebraska State High School Football Championships Live
Thursday, November 15 – Saturday,
November 17

10:30 a.m. and 7 p.m. CT on NET1
and NET-HD and webcast on
netNebraska.org.

Catch It All This Fall

Autumn’s chilly weather brings the perfect excuse to curl up with some good television. Tune in to NET Television for these great programs and more. Check your local listings or netNebraska.org for more details and additional broadcast dates and times.

Murder House

November 8 at 9 p.m. CT and November 29 at 7 p.m. CT on NET1

Psychology, history, biology and accounting are all common college majors, but what about majoring in murder? Such a program exists right here in Nebraska – the Master of Forensic Science program at Nebraska Wesleyan University in Lincoln prepares students to become crime scene investigators and forensic laboratory specialists.

NET Television’s *Murder House* takes you behind the scenes to learn how professional CSIs are trained and how their expertise has influenced the judicial system and the public’s perception of detective work. You’ll also learn how the recent Edwards/O’Grady murder trial in Omaha was a real-life CSI success story.

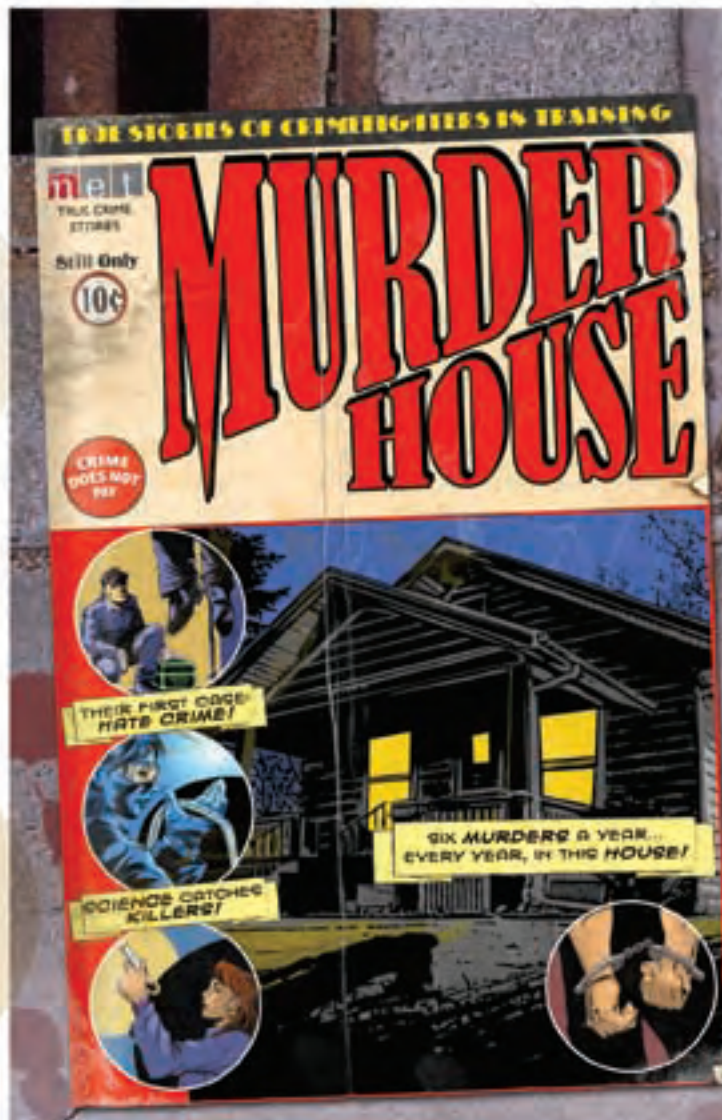
Enjoy a sneak peak at Murder House!

Murder House Premiere
October 29, 7:30 p.m.
O’Donnell Auditorium, Nebraska Wesleyan University campus, Lincoln. Free and open to the public; reception to follow premiere at NWU Art Gallery.

Nebraska Veterans Honor Roll

November 11 at noon and 6 p.m. CT on NET1.

Catch the name of your loved one as we honor America’s veterans with this special tribute. The names of the men and women who have served their country will be scrolled on screen, accompanied by excerpts from NET Radio’s *War Letters* program.



The War: Nebraska Stories

November 10 at 9 p.m. CT on NET2 and 9:30 p.m. CT on NET1

Oral histories of Nebraska WWII veterans are woven together in two half-hour programs and broadcast in conjunction with the Nebraska Veterans Honor Roll.

On the Dial



Taking the Radio Reins

She's a voice and name you probably know well from the countless hours she's spent on-air during our membership drives and as an announcer. Now Nancy Finken has taken on a new role: in June she was named NET Radio's new network manager.

Finken leads NET Radio at a very exciting and challenging time for public media. She's just the right person for the job, having held several key positions at NET which helped shape the very sound and substance of one of the best state public radio networks in the country.

"It's a dream come true for me," says Finken. "The opportunity to lead such a talented staff and to serve such a generous, loyal audience is exhilarating!"

Radio savvy

Finken served as NET Radio's assistant network manager and director of programming for the past seven years, handling the network's scheduling, managing day-to-day operations, developing new programs and planning on-air fund drives. Before that, she guided the news department to dozens of awards during her eight years as news director.

Since joining us in 1992, Finken has earned a number of awards herself, including Nebraska "Journalist of the Year" from the Society of Professional Journalists. She was named the 2006 NET Employee of the Year and has served as an instructor in the University of Nebraska-Lincoln Journalism College.

Before joining NET Radio Finken worked as news director at Radio Kansas and began her career as a reporter at KQTV in St. Joseph, Mo. She earned a bachelor's degree in broadcast journalism from Northwest Missouri State University.

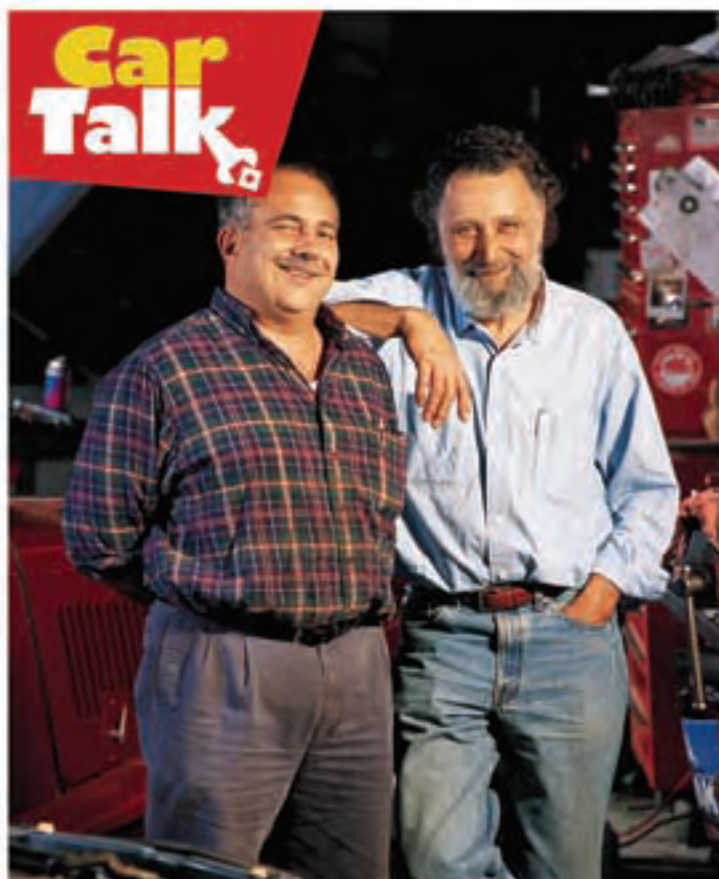
Please join all of us at NET in welcoming Nancy Finken in her new position.

Car Talk Comes to TV

You love their auto insights and their hearty guffaws, and now you'll be able to catch Click and Clack on TV. PBS is launching an animated sitcom, based on the hit NPR radio show *Car Talk*, in summer 2008.

The as-yet-untitled fast-paced series, which will launch with ten 30-minute episodes, will take off where the radio series ends, focusing on the adventures of Click and Clack and their crew of mechanics and co-workers. Based largely in Tom and Ray's fictional garage, the show will feature the "off-air" escapades of the Tappet brothers as they try to fix cars and fend off disgruntled customers.

This is PBS' first foray into primetime animation for a general audience. A contest allowing fans to submit their own suggestions for the television program title will be announced soon. Tune in to *Car Talk*, Saturdays and Sundays at 10 a.m. CT on NET Radio, for details.



Podcasting Perks

You can hear your favorite NET Radio programs when and where you want, via a podcast:

- *Friday Live*
- *All About Books*
- Select humanities desk pieces
- Select news and feature pieces
- *Campaign Connection*
- Plus video podcasts of NET Television programs like *Backyard Farmer* and *Big Red Wrap-Up*

Visit netNebraska.org and click on "Podcasts" to learn more.





Radio

Live from the Loft:

Jazzy!

Autumn is upon us – the leaves have turned, there’s a chill in the air, darkness falls early... what better time to enjoy an evening of live radio entertainment?

Join NET Radio on Saturday, November 3 at 7 p.m. CT for a live broadcast of the Darryl White Group, performing at The Loft at the Mill in Lincoln’s historic Haymarket District (the live jazz broadcast follows *A Prairie Home Companion* live at 5 p.m. CT on NET Radio).

This is NET Radio’s first live concert broadcast in 15 years, so it’s a special opportunity to hear some fine jazz.

White, a trumpet musician and a music professor at the University of Nebraska-Lincoln, will also lead a 90-minute workshop for 30 high school musicians and their teachers from 10 high schools across the state during the day, helping students expand their understanding of jazz and their mastery of technical skill.

Support for NET Radio’s *Live Jazz Special* was provided in part by the Elizabeth Rubendall Foundation and the Nebraska Arts Council.

Visit netNebraska.org/radio for more information.



Reporter Spotlight: Sarah McCammon

One might think that transitioning from a career as a print journalist to that of a radio journalist would be challenging, but NET Radio reporter Sarah McCammon embraced the change with ease.

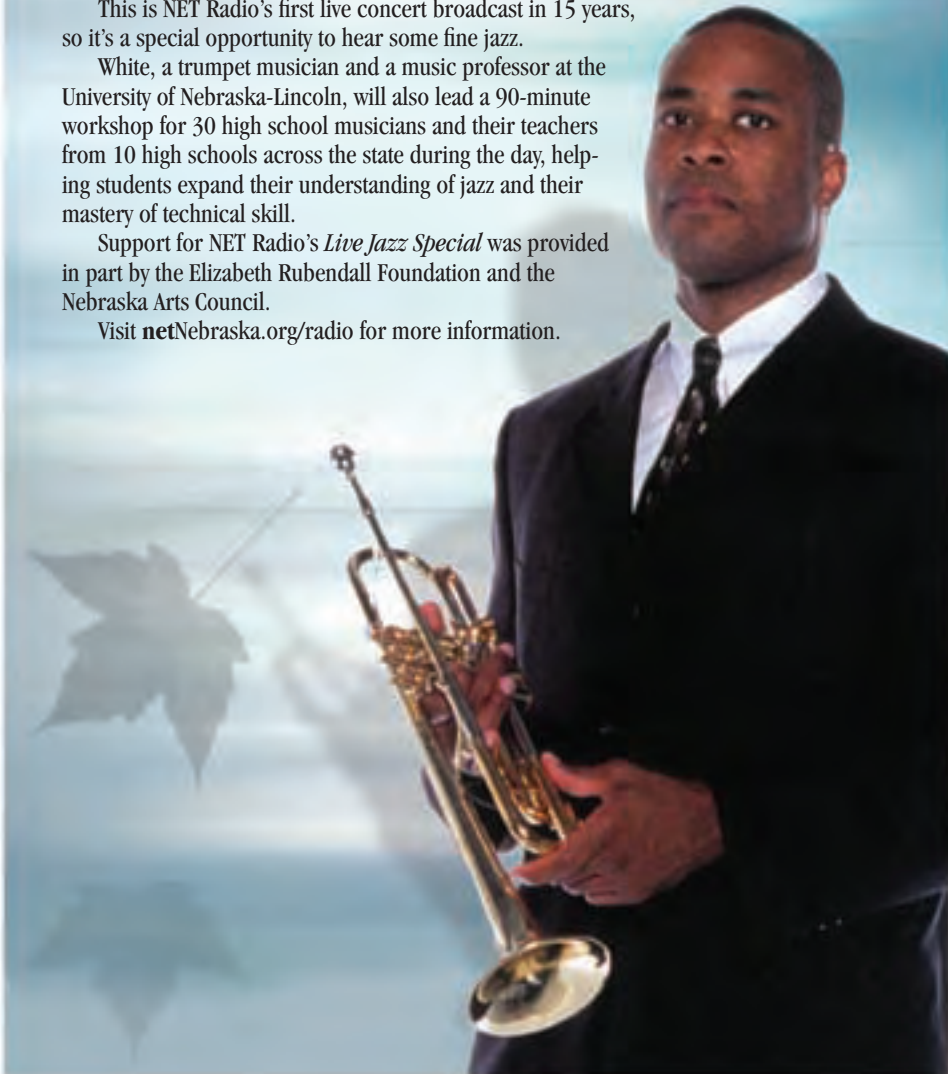
“The basics are the same: research, developing sources, conducting interviews and staying on top of the beat,” says McCammon, who worked as a newspaper reporter in Chicago before moving to Lincoln three years ago. “But the writing style is a bit different – you have less time, so you need to be more succinct.”

Of course, radio reporting allows for unique opportunities that print doesn’t, like the element of sound. “Using natural sound adds an extra dimension to the story,” explains McCammon. “Not only do you hear what someone has to say, you also can hear how the person says it, and that can make a richer story.”

McCammon has always admired public radio, noting that listeners get a more in-depth approach to a story, rather than a cursory snippet. Since coming to NET Radio she’s worked as a general assignment reporter, focusing on agriculture, the environment, natural resources and health and science issues, including stories on Nebraska’s water concerns and the methamphetamine crisis.

Several of her pieces have aired nationally on NPR programs including *Morning Edition*, *All Things Considered* and *Weekend Edition*, and McCammon also received a national reporting award from the Society of Environmental Journalists for a feature broadcast on NPR about the fire history of the Great Plains.

Tune in to NET Radio during *Morning Edition* and *All Things Considered* to hear what Sarah McCammon will report on next, or listen online at netNebraska.org/radio.



Her Game Plan

A Nebraska athletics leader inspires Nebraskans with her lasting gifts.

Some people dream big. Others dream big and then make those dreams reality. Such was the case with Dr. Barbara Hibner. She died last March after battling bone cancer, but the thousands of young women she touched during her 28 years at the University of Nebraska survive as her lasting legacy.

Dr. Hibner left a second legacy as well: her generous gift of \$50,000 from her TIAA CREF retirement account, which will fund NET Television's sports programming.

Title IX and nine titles

Born in Gettysburg, Penn., Hibner graduated from Penn State University in 1964 and earned a Master's Degree from the State University of New York at Cortland and a Ph.D. from Texas Women's University. She launched her career during a critical time in women's athletics, just as the groundbreaking Title IX Educational Amendment was enacted in 1972.

Dr. Hibner began her Husker career as Nebraska's Assistant Women's Athletic Director from 1978 to 1985, then served as Women's Athletic Director until 1994 and retired as Senior Women's Administrator in 2005. Her leadership saw Nebraska women's teams through nine national titles.

No detail too small

But those are just the job titles. Dr. Hibner's real impact was in the people she touched, like Husker Head Softball Coach and Senior Women's Administrator Rhonda Revelle, who first met Hibner



Dr. Barbara Hibner with Husker Head Softball Coach Rhonda Revelle

as an athlete in 1981. "She gave me and Nebraska Women's Athletics every piece of knowledge and every ounce of energy she had," said Revelle. "Most of all, Dr. Hibner taught us all to lead by word and by example."

Dr. Hibner dreamed large but never overlooked the details. When the former Husker softball field needed lights, Hibner knocked on doors until the money was raised. And before the days of sell-out crowds, she set up and took down folding chairs for the Husker volleyball matches.

"Her stamina for doing the important tasks that others would disdain was legendary," said former Husker Volleyball Coach Terry Pettit.

Integrity leads and lasts

Barbara Hibner was too ill to witness the Husker women victorious against Stanford in the 2006 NCAA Volleyball Championship last December. But her spirit loomed large, and will resound in generations of Nebraska athletes to come.

"Her true legacy will live on in the individual athletes she fought for, mentored, protected and ultimately loved," said former Husker track and field star Nancy Kindig-Malone. She always said, 'Integrity leads and lasts.' Her life was a testimony to that statement."

Join the NET Sports Partners Club Today

What's better than witnessing the Nebraska Women's Volleyball team in action? Or experiencing the hometown pride of the High School State Football Championship?

As a Nebraska sports fan, you know that athletics connect us – inspiring us through examples of perseverance and spirit, and bringing excitement and fun to our lives.

As a member of the **NET Sports Partners Club**, you'll support more than 200 hours of sports programming annually on NET Television and enjoy the following:

Benefits

- An attractive NET Sports Partners Club certificate, suitable for framing;
- Unique sports-related membership gifts, like:
 - *A Day in the Life of a Husker* DVD;
 - An NET Sports duffle bag;
 - A copy of *The Catch*, an autographed poster of famed Huskers Matt Davison and Scott Frost;
- The NET Card, which entitles you to discounts at more than 40 attractions and events statewide.



NET Television guarantees that you always get the best seat in the house for Nebraska sports. So join the NET Sports Partners Club today! Call 800.634.6788 or

go online: netNebraska.org/sportspartners.

It's Your Turn to Inspire Nebraska

Gifts from a retirement account, gift annuities and gifts of stock are just a few of the unique ways you can support NET Television and NET Radio and, in turn, inspire Nebraska. The end of the year is a perfect time to consider a gift.

For ideas and guidance, please contact one of the NET Foundation planned giving professionals:



Jeff Beckman
Executive Director
402.472.9333, ext. 380
jbeckman@netNebraska.org



Michele Peón-Casanova
Director of Major & Planned Gifts
402.472.9333, ext. 375
mpeon-casanova@netNebraska.org



Bridget Robbins
Omaha Development Director
402.699.7734
brobbins@netNebraska.org

Donors' Corner

Memorial Gifts

Memorial gifts are a lasting memory of your loved one's commitment to the mission of NET Television and NET Radio. This legacy becomes a part of our endowed Funds for the Future, which help ensure the future of public broadcasting in Nebraska.

Gifts were recently received in memory of:

Lila Hobson
Gaylord Bartels



To learn how to make a memorial gift, contact Dawn Amory at damory@netNebraska.org or 800.634.6788.

Charitable Gift Annuities

Everyone wins with a gift annuity – both you and the charity you love. Here's how it works:

A charitable gift annuity is a way to make a gift to your favorite charity and still receive an income for yourself or others. It is a contract under which a charity, in return for a transfer of cash or other property, agrees to pay a fixed sum of money for the rest of your life and the life of another person, if you choose.

Payments from a charitable gift annuity are fixed from the outset, so they won't increase or decrease, even when the stock market fluctuates. The American Council on Gift Annuities meets regularly to determine and recommend the maximum amount annuities should pay out to you. See the box below for rates.

Single Life Gift Annuity Rates

Age	Rate
60	5.7%
61	6.5%
62	8.0%
90+	11.3%

\$10,000 minimum gift required.

For more information on gift annuities, please complete this reply form and mail it to:

NET Foundations, 1800 North 33rd Street, Lincoln, NE 68503
Attn: Michele Peón Casanova. Or call Michele at 800.634.6788

Please contact me for more information on gift annuities.

Name _____

Street _____

City _____

State _____ Zip _____

Home Telephone: _____

E-mail: _____

NET Card Show your support



If you are a member of the NET Foundation for Television or the NET Foundation for Radio you will receive the NET Card, which entitles you to special discounts with the businesses and organizations listed here, as well as discounts on program-related products when you shop online at the NET Store – netNebraska.org.

Abendmusik: Lincoln, Inc.

2000 D St., Lincoln, NE
402.476.9933

A community concert series founded in 1972. \$2 off any single ticket purchase during the concert season.

Ainsworth Inn Bed & Breakfast

400 N. Main, Ainsworth, NE
888.237.0954

Step back into early 1900s in this boarding house B&B. 10% discount on the rate of a regular room (excluding Labor Day weekend and the week of the Country Music Festival).

Angels Company Lincoln, NE

402.474.2206

A performance group consisting of actors, dancers, musicians and visual artists. \$1 off admission.

Art and Gift Gallery

516 N. Dewey, North Platte, NE
308.534.1946

A cooperative art gallery featuring a member artist each month. 10% discount on purchases.

Ashfall Fossil Beds State Historical Park

2 miles west and 6 miles north of Royal, NE
402.893.2000

View hundreds of long-extinct animals frozen in time. 20% off gift shop.

Beatrice Community Players

412 Ella St., Beatrice, NE
402.228.1801

High-quality live theatrical entertainment including top-name plays, musicals and other events. \$1 off admission.

Bellevue Little Theatre

203 W. Mission, Bellevue, NE
402.291.1554

Providing award-winning live theater since 1969. Enjoy one complimentary single admission when you purchase one adult single admission at regular price.

Blue Moon Coffee Company

635 W. 2nd St., Hastings, NE, 402.462.5214,
313 W. 3rd St., Grand Island, NE, 308.398.5214

Your local coffee house serving standard and specialty coffee drinks with a full lunch menu. \$1 discount on any specialty drink (cannot be combined with any other offer).

Cambridge Bed & Breakfast

606 Parker, Cambridge, NE

308.697.3220

An artistic and historic home with modern amenities. 10% discount on the rate of a regular room (excluding Hunting Packages).

The Coffee House

1324 P St., Lincoln, NE, 402.477.6611

1010 Lincoln Mall, Lincoln, NE, 402.483.9132

Offering Fair Trade and organic coffee by the cup or whole bean, specialty drinks and desserts. Buy one select specialty drink, get one select specialty drink free (cannot be combined with any other discount or gift certificate).

Edgerton Explorit Center

208 16th St., Aurora, NE

877.694.4032

The mystery and fun of science come to life through interactive exhibits and science demonstrations. \$1 off regular admission price, 20% off the Explorit Gift Store purchases, 50% off meeting room rental plus free electronic sign promotion, 20% off Edgerton On The Move (traveling science demonstrations) at your events.

El Museo Latino

4701 S. 25th St., Omaha, NE, 402.731.1137

The first Latino art and history museum and cultural center in Nebraska. Receive \$1 off admission and 10% discount in the museum's Gift Shop.

Fontenelle Forest Nature Center

1111 N. Bellevue Blvd., Bellevue, NE

402.731.3140

Experience nature first-hand. Listen to the sounds of songbirds; watch fireflies flicker; explore flowers, plants and trees – and much more. \$2 off admission; 10% discount on a Fontenelle Nature Association membership.

Friends of the Mary Riepma Ross

Media Arts Center

313 N. 13th St., Lincoln, NE

402.472.5555

Experience the new Mary Riepma Ross Media Arts Center – committed to screening a wide diversity of high-quality film and video. 10% discount on all levels of membership in the Friends of the Mary Riepma Ross Media Arts Center (NET Card holders must show card to get a discount).

Hastings Museum/Lied Super Screen Theatre

1330 N. Burlington Ave, Hastings, NE

800.508.4629

Enjoy three huge floors of exhibits, the J. M. McDonald Planetarium with daily sky shows and five-story-tall Lied Super Screen Theatre. Half-price museum/planetarium admission with each large-format film admission, 20% off in The Museum Store (not valid with any other discounts).

Hastings Symphony Orchestra

Hastings, NE

402.462.8389

Providing outstanding music for over 80 years. \$3 discount on each ticket purchased at the door for individual subscription concerts.

James Arthur Vineyards

2100 West Raymond Rd., Raymond, NE

402.783.5255

We offer award-winning wines, from aged dry reds to sweet whites with everything in between. 10% discount on individual bottles of wine and a 15% discount on cases of wine (may be mixed).

Lincoln Children's Museum

1420 P St., Lincoln, NE

402.477.4000

The Lincoln Children's Museum offers three floors of hands-on exhibits for families and is recognized as one of the top 20 children's museums in the U.S. 10% discount on regularly priced items in the Museum Store.

Lincoln Community Playhouse

2500 S. 56th St., Lincoln, NE

402.489.7529

Enriching the cultural life of our city for 60 seasons. Celebrate the power of community involvement in live theater. \$2 off any regularly priced ticket in the Main Stage season (any other discounts excluded).

Lincoln Friends of Chamber Music

12th & R St., Lincoln, NE

402.435.5454

Providing southeast Nebraska with superior chamber music. Performances in the unique setting of the Sheldon Art Gallery. \$5 discount on regularly priced LFCM concerts.

Lincoln's Symphony Orchestra

Lincoln, NE

402.476.2211

Experience the finest in classical music, including an exciting family series. 10% off regular single ticket price to any concert this season.

Meadowlark Music Festivals Touring Nebraska

402.488.9555

Bringing world-class musicians to the Nebraska prairies. \$2 discount for all concerts (children 16 and under free).

Morrill Hall University of Nebraska State Museum

14th & U St., Lincoln, NE

402.472.2642

Nebraska's largest natural history museum. \$1 off family admission.



NET Card

Museum of Nebraska Art (MONA)

2401 Central Ave., Kearney, NE
308.865.8559
Experience more than 175 years of great art from the 19th century to the contemporary scene.
10% discount at the museum shop.

Museum of the Fur Trade

6321 Highway 20, Chadron, NE
308.432.3843
See the history of the first business in North America – the fur trade.
Receive one free admission per visit.

The Nebraska Brass

Lincoln, NE
402.477.7899
Combinations of classical and popular music, Dixieland and jazz. Performing in Lincoln, Omaha and various locations throughout Eastern Nebraska.
\$2 off single admission ticket price for any Concert Series concert.

Nebraska Golfing Green Card

800.401.7888
The Golfing Green Card is your passport to a fun-filled, golf-filled summer. Enjoy a free or highly discounted round of golf at 174 area golf courses.
Save \$5 on each Green Card.

Nebraska Jazz Orchestra

Lincoln, NE
402.477.8446
One of the Midwest's premier big bands, the ensemble presents legendary compositions by jazz masters such as Woody Herman, Duke Ellington and Count Basie.
\$2 off single admission ticket price for any Concert Series concert.

Nebraska Trumpet Ensemble

Lincoln, NE
402.477.7899
Performing trumpet ensemble literature and commissioning new works for trumpet ensemble.
\$1 off single admission ticket price for any Concert Series concert.

John G. Neihardt State Historical Site

Bancroft, NE
402.648.3388
Honoring Nebraska's poet-laureate; featuring exhibits of Neihardt's life and work.
10% discount on books and gift shop items.

Norfolk Arts Center

305 N. 5th St., Norfolk, NE
402.371.7199
The Norfolk Arts Center specializes in "Bringing People and the Arts Together!" through exhibits, performances, classes and other special events.
Enjoy one complimentary adult single admission when you purchase one adult single admission at regular price.

North Platte Valley Museum

11th & J, Gering, NE
308.436.5411
Take a trip through time. Located on the Oregon and Pony Express Trails, the North Platte Valley Museum tells the stories of the Plains Indians and the first European settlers of the Nebraska Panhandle.
\$1 off single adult admission.

Omaha Children's Museum

500 S. 20th St., Omaha, NE
402.342.6164
Providing hands-on interactive exhibits and programming to introduce young people to the arts, humanities, science and technology.
\$1 off each admission (limit 6 per group).

Omaha Symphony Association

1605 Howard St., Omaha, NE
402.342.3560
See a variety of programs from classical to family concerts to world-renowned guest performers. Performing at the state-of-the-art Holland Performing Arts Center.
15% discount on single tickets to MasterWorks, Light Classics and Discovery Series concerts (not valid with any other offer).

Opera Omaha

409 S. 16th St., Omaha, NE
877.346.7372
Opera Omaha, bringing world class artists and productions to the historic Orpheum Theatre.
Discount up to 30% off regular ticket price. Offer good only for advance ticket sales; special order form must be used.

Osher Lifelong Learning Institute (OLLI)

140 Home Economics
University of Nebraska-Lincoln, East Campus
402.472.6265
UNL's OLLI provides opportunities to members for ongoing development and personal enrichment through year-round, seven-week courses, field trips, volunteer groups and other special-interest activities.
\$10 discount off annual OLLI membership.

The Petrified Wood Gallery

521 E. 1st St., Ogallala, NE
308.284.9996
The Gallery is a showcase of natural history specializing in ancient woods, fossils, Indian arrowheads and artifacts.
10% discount on gift shop purchases. Exclusions apply.

Prairie Books & Gifts

641 W. 2nd St., Hastings, NE
402.462.6205
Your full-service independent bookstore since 1976, featuring "The Nebraska Room" and a large children's department. Special orders always welcome.
10% discount on regularly priced items excluding magazines.

Sheldon Memorial Art Gallery

12th & R St., Lincoln, NE
402.472.2461
Located on the University of Nebraska-Lincoln campus, the Sheldon houses more than 12,000 works of art in all media.
10% on museum store purchases (excluding any other discount or offer).

Shepherd's Inn Bed & Breakfast, Inc.

RR 3 Box 108A, Ord, NE
308.728.3306
Enjoy a quiet escape tucked away in the heart of the country.
10% discount on a regular room (excluding holidays, area festivals and other discounts).

Sisters' House

412 Garfield, Stuart, NE
877.773.3390
Formerly a convent, this bed & breakfast now features period décor on the upper floor and a rustic cottage style on the lower level.
10% discount on the rate of a regular room.

Soaring Wings Vineyard

17111 S. 138th St., Springfield, NE
402.253.2479
International award-winning wines and spectacular views of the Platte River Valley await.
Receive a 10% discount on each bottle of wine and 15% off on all cases of wine.

Stuhr Living History Museum

3133 W. Hwy 34, Grand Island, NE
308.385.5316
More than a museum... a living history experience!
\$1 off any regularly priced admission (discount not valid with any other offer).

Third Chair Chamber Players

8th & P St., Lincoln, NE
402.429.8227
Take a journey through the genealogy of chamber music from early Baroque to the present.
\$2 discount on individual adult tickets (maximum of 4).

Trailside Museum of Natural History

Fort Robinson State Park
308.665.2929
Spectacular paleontology and geology exhibits.
20% off gift shop.

Whiskey Run Creek Vineyard & Winery

702 Main St., Brownville, NE
402.825.6361
Experience excellent wine and an engaging escape. Whiskey Run Creek works with varieties of grapes to locally produce distinct and flavorful wines.
10% discount off wine and gifts from Whiskey Run Creek Vineyard & Winery (excluding any other discount or offer).



We love to get out and about to meet you – the people who love and support NET! Here's a look at the places we've visited in the last few months.

Lincoln
More than 600 supporters turned out to honor Nebraskan and Japanese-American World War II hero Ben Kuroki and preview the NET Television documentary *Most Honorable Son* on August 1 at the Embassy Suites in Lincoln. The event, which benefited NET, raised a record \$140,000.

Omaha
Clifford The Big Red Dog had plenty of canine company at the Nebraska Kennel Club Dog Show, July 20-22 at Omaha's Qwest Center. More than 2,000 people saw agility competitions and obedience classes, plus NET Television's favorite big red dog.

More than 7,500 fans cheered on NET Foundation Executive Director Jeff Beckman as he threw the first pitch for the Omaha Royals on August 5 at Rosenblatt Stadium.

Out & About



HONORABLE SON

More in Omaha

Nearly 75 NET supporters had their most pressing homeowner questions answered by the experts when the *Ask This Old House* cast and crew came to the Joslyn Castle on September 27.

NET partnered with Creighton University Law School on October 16 to present a Supreme Court in-service workshop to Nebraska high school civics teachers.

On October 18 Andre Rieu wooed Nebraskans once again with a concert at the Qwest Center. We pledged more than 2,600 tickets to the event, with more than 600 NET supporters enjoying a traffic-free luxury motor coach ride from Lincoln to Omaha as part of their pledge package.

Statewide

Four *Saving Nebraska's Treasures* workshops were offered in July, August and September via satellite to locations from Chadron to Scottsbluff. Participants learned how to preserve heirlooms from ceramic and glass to photographs and books as part

of the workshop series, which was an outreach initiative offered in conjunction with the NET Television production *Saving Nebraska's Treasures*. The *Saving Nebraska's Treasures* program and workshops were a cooperative effort of NET, the Nebraska State Historical Society's Ford Conservation Center and the Nebraska Library Commission.

Seventeen screenings of Ken Burns' landmark film *The War* were held statewide in September, from the Durham Western Heritage Museum in Omaha to the Minden Opera House and the Red Cloud Opera House, Western Community College in Scottsbluff and libraries in Kearney, Plattsmouth and Nebraska City. A screening also previewed at the Mary Riepma Ross Media Arts Center in Lincoln.



Curious George is curious about kids, and he's seen thousands of them at NET Television events in August, September and October! So far, the playful primate has posed for pictures and handed out hugs at Henry Doorly Zoo, Union Pacific Railroad Museum, the Nebraska Humane Society's "Walk for the Animals," Rails West Railroad Museum and The Historic General Dodge House. See "Upcoming Events" for more Curious George stops.

Upcoming Events

For more information call 800.634.6788 or visit netNebraska.org.

November

Curious George Visits Omaha's Public Libraries

Visit netNebraska.org/curiousgeorge for information on dates, times and locations.

NET Foundation for Television and Radio Board Meeting

November 9
Lincoln

December

Curious George Visits the Omaha Children's Museum

December 1 and 2

Visit netNebraska.org/curiousgeorge for details on the Omaha Children's Museum event.

NET Television Membership Drive

December 1-8

It's a Wrap



Curious George recently welcomed three new kids shows to NET Television!

In a Word, NET Television's New Kids Shows

are Great!



Word World

Super Why!



The *Super Why!* fairytale friends transform into reading superheroes in the only preschool program that teaches reading fundamentals through interactive storybook adventures. *Super Why!* Super Readers literally jump into books! They embark on exciting adventures, play interactive reading games and overcome obstacles to save the day.

Super Why airs weekdays at 9 a.m. and 2:30 p.m. CT on NET1 and Monday, Tuesday, Wednesday and Friday evenings at 7 p.m. CT on NET2.

WordWorld

On *WordWorld*, the wacky *WordFriends* are characters first and words second. Preschoolers are invited on comic adventures, where problems are resolved by "building" the right word. First, the word forms and then it morphs into the thing it represents.

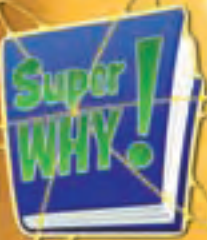
Watch *WordWorld* weekdays at 11:30 a.m. CT on NET1.

Word Girl

For older kids, the definition dynamo Word Girl defeats bad guys and gals with her superhero vocabulary and her sidekick monkey. The mild-mannered fifth grader and super heroine-in-disguise Becky Botsford gives elementary school kids a fun and unique way to learn the power of new words. With sophisticated vocabulary like "obliterate" and "indubitably," the series enriches vocabulary, instills a love of language and fosters better reading comprehension.

Word Girl airs in the "PBS Kids GO!" block on Fridays only at 4:30 p.m. CT on NET1.

Visit netNebraska.org for information on all the PBS Kids Programs.



PARTNERS

is published as a member benefit for the supporters of the NET Foundation for Television and the NET Foundation for Radio.

NET Foundation for Television
NET Foundation for Radio
1800 N. 33rd Street
Lincoln, NE 68503
800.634.6788
netNebraska.org

NonProfit Org.
U.S. Postage
PAID
NET Foundation
for Television